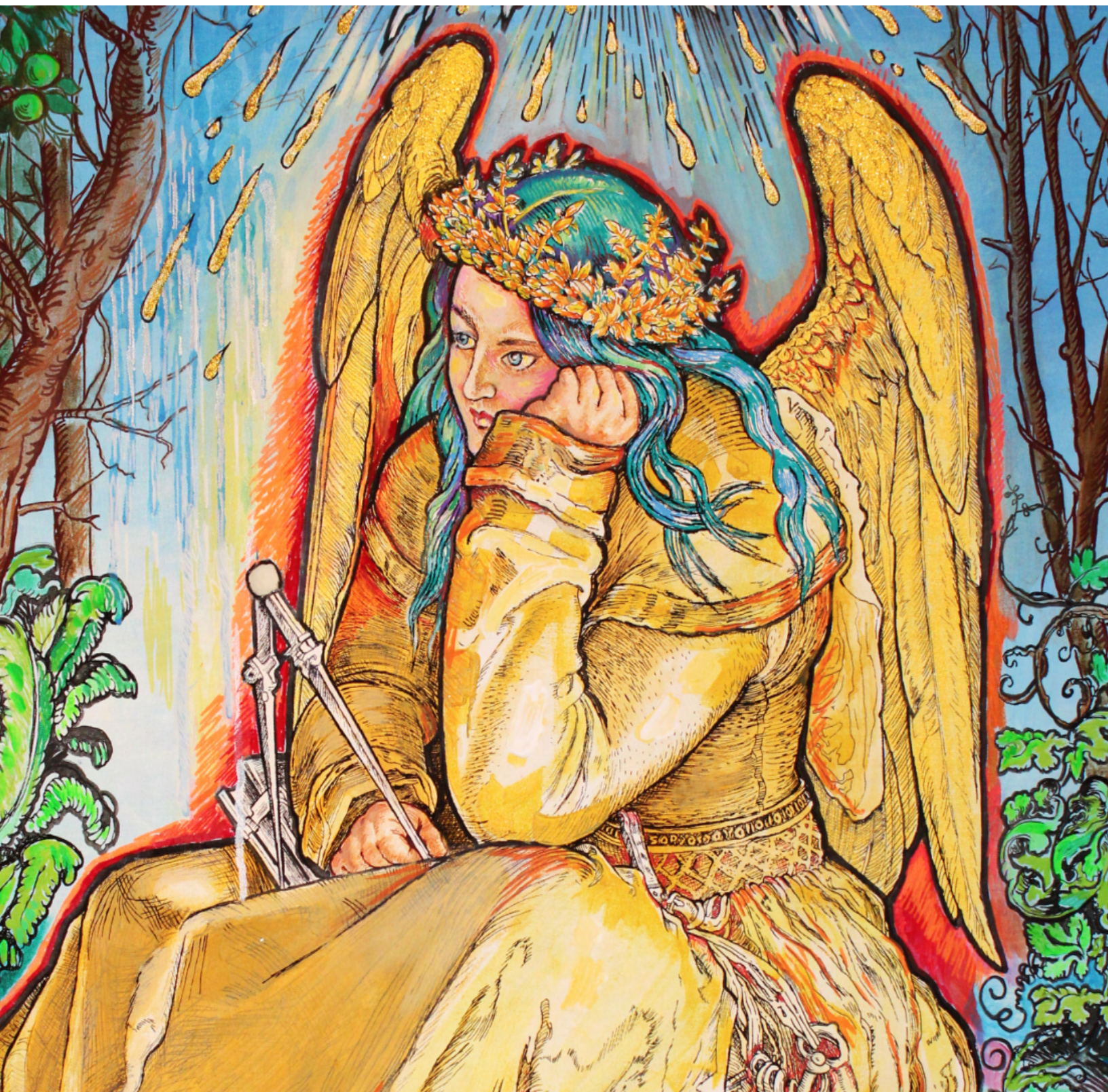


July 2022 - November 2022

Nassau County Museum of Art

# MUSENEWS

Arnold and Joan Saltzman Fine Art Building





# OTHER WORLDS THAN THIS

In one spectacularly far-reaching exhibition, ranging from ancient artifacts to the art of today, we explore the timeless and global phenomenon of the supernatural. Artists have access to worlds beyond the one we know through visions, dreams and fantasies that summon a celestial realm of spirits, deities, monsters and extra-sensory phenomena. The mysteries of Olmec stargazer sculptures and Shang dynasty chimeras are lost in time. For the Renaissance master Dürer, the metaphysical becomes real in images of the apocalypse and alchemy. The Surrealists, from Dalí and de Chirico to Tanguy and Magritte, lived in a dream world of myths and the unconscious while their heirs, including Baziotès and Motherwell as well as artists of our time such as Rona Pondick, Christopher Winter, Inka Essenhigh, Michaël Borremans and Robert Gober, wield their own magic. Join us on a wild trip into the next dimension with some of the greatest artists in history as our guides.





DÜRER

GOYA

DALÍ

MAGRITTE

DE CHIRICO

TANGUY

BRETON

MASSON

MOTHERWELL

ESSENHIGH

BORREMANS

PONDICK

WINTER

GOBER

REGISTER  
FOR LIVE  
AND VIRTUAL  
PROGRAMS  
ONLINE



ART  
CLASSES  
FOR ALL  
AGES AND  
ABILITIES



OUTDOOR  
ACTIVITIES,  
SCULPTURES  
AND NATURE  
TRAILS



FAMILY  
PROGRAMS  
TO SERVE  
OUR  
COMMUNITY

# Public Programs

Pre-registration required for programs at [nassaumuseum.org](http://nassaumuseum.org)



## Brown Bag Lectures

with Riva Ettus

Virtual

**Dates:** Thursdays  
Sept. 15, Oct. 13

**Time:** 1 pm **Via Zoom**

**Price:** Free for Members,  
\$10 Non-members

Grab your lunch and join Museum Docent Riva Ettus in her popular "Brown Bag Lecture" for a Live via Zoom experience of NCMA's exhibition, *Other Worlds Than This*. Participants are invited to ask questions at the end of the program.

This program is sponsored by the Ike, Molly & Steven Elias Foundation

“

BEST  
BROWN BAG  
LECTURES!

”



## Autumn Sculpture Stroll

On-site: Manes Center  
Meet on front terrace

**Date:** Thursday, Oct. 6 (rain  
date Oct. 13)

**Time:** 5:30 pm

**Price:** \$10 Members,  
\$20 Non-members

Join Laura Lynch, director of education, for an hour of discovery and conversation as we travel across the Museum's ground to explore a selection of sculptures sited across our property. Each stop on the tour will delve into the choices, inspirations and materials of the artists and their sculptures, including our two new works. The rain date is Oct. 13. If rain is forecast, we will email you the day before by 5 p.m. to postpone.



## Music at the Museum

For the third straight year, maestro David Bernard (Juilliard trained conductor and clarinet virtuoso) brings the best of the region's chamber and orchestral players to the Museum and its grounds. From full-scale Beethoven symphonies to intimate chamber ensembles, including a July program of octets by Schubert and Paul Taffanel, weekend concerts are free with admission.

## Making Contact

with Patrice Keane

Virtual

**Date:** Thursday, Oct. 20

**Time:** 6:30 pm **Via Zoom**

**Price:** \$10 Members,  
\$20 Non-members

Believe it or not, the fascination with the powers of the psychic never fades. The American Society for Psychic Research was founded in 1885 by the great psychologist William James and others. To this day they ponder the great question: In what unexplained ways do we connect with the universe and each other?



# Artists and Scholars

Pre-registration required for programs at [nassaumuseum.org](http://nassaumuseum.org)



## Rona Pondick

**On-site:** The Mansion

**Date:** Sunday, Oct. 23

**Time:** 3 pm

**Price:** Free for Members, \$20 Non-members

Renowned American sculptor Rona Pondick has mastered the figurative language of the body. She has had 51 solo exhibitions in both museums and galleries internationally and has been featured in numerous biennials. Her work can be found in the collections of 49 museums internationally. In the fall of 2022, Pondick's sculpture will be on view at the Belvedere in Vienna and then in London for a solo exhibition in 2023. Pondick will discuss her work, and talk about her history as an artist since she started exhibiting in the mid 80s.



## Exploring Shang Dynasty Jade

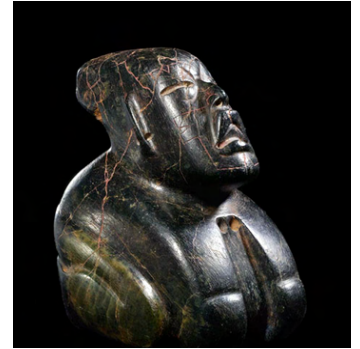
with Frank Aon

**On-site:** The Mansion

**Date:** Sunday, Oct. 9

**Time:** 3 pm

**Price:** Free for Members, \$20 Non-members  
Scholar and Sinophile Frank Aon digs deep into the wonders of Shang dynasty jade sculpture, including its symbolism and the relation to the early animist belief systems of that ancient time three millennia ago in China. He will be our guide to the dramatic archaeological finds of Qin Sha and Tsin Sha Tsui. Aon is a material scientist at Orenda Lab in New Mexico, working in the fields of geology, mineralogy and metallurgy.



## The Mystery of the Olmec Stargazers

**On-site:** The Mansion

**Date:** TBD

**Time:** 3 pm

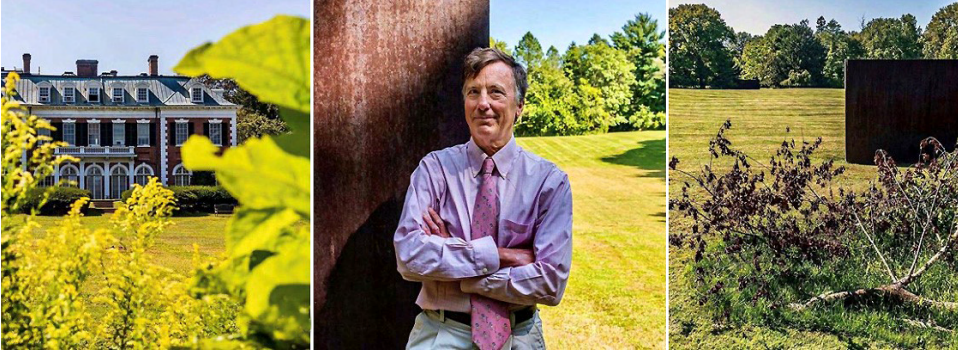
**Price:** Free for Members, \$20 Non-members

Their far-off look is haunting even as the precision of the carving is exquisite, but the biggest question raised by these extraordinary ancient sculptures is the matter of their origins. Who carved them and why? We join the historical speculation with one of the foremost experts in Pre-Columbian antiquities to welcome these visitors from two thousand years ago.

“  
WHO  
CARVED THESE  
EXTRAORDINARY  
SCULPTURES  
AND WHY?  
”

# Artists and Scholars

Pre-registration required for programs at [nassaumuseum.org](http://nassaumuseum.org)



## Director's Seminar

Eye and Mind with Museum Director Charles A. Riley II, PhD

**On-site:** The Mansion

**Dates:** Tuesdays, Sept. 20, Oct. 11, Nov. 1

**Time:** 4-6 pm

**Price:** \$20 Members, \$40 Non-members per session

### Session I

#### The Spiritual in Art

**Date:** Tuesday, Sept. 20  
Kandinsky's influential theory pursued the inner meanings of color and form transcending the outer (material) basis of painting and sculpture. We will refer not only to the abstract art he pioneered but also to the music (Debussy and Schoenberg) and intellectual context of his powerful aesthetic, using works in the exhibition by Dorothea Rockburne, Mary Corse and others.

### Session II

#### Supernatural Powers

**Date:** Tuesday, Oct. 11  
Reading Freud on the "omnipotence of thought" and Jung on the collective unconscious, we explore the psychological origins of magical belief, including shamanism and animism, with reference to tribal objects and works in the show as well as the alchemical symbols in Dürer. We will decode the patterns and symbols in these potent works and consider the relations between magic and art.

### Session III

#### The Persistence of Surrealism

**Date:** Tuesday, Nov. 1  
The drama and poetry of the Surrealist movement, along with masterworks of painting and sculpture, started with Breton, Masson, Dalí and Magritte and continue to this day in the other-worldly art of Rona Pondick, Inka Essenhigh, Christopher Winter and others in the show.



## What's So Funny About Art?

**The Surrealists and their Jokes**

**On-site:** The Mansion

**Date:** Sunday, Nov. 6

**Time:** 3 pm

**Price:** Free for Members, \$20 Non-members

From Salvador Dalí's ridiculous moustache to Marcel Duchamp's irreverent treatment of the Mona Lisa and Magritte's bowler hat, you can tell the Surrealists were a bunch of smart-asses with a wicked sense of humor. The first time our director did stand-up, he was the only one who thought it was funny but we hope you will give him another chance and join us again. How many Surrealists does it take to change a light bulb?

**Come have a laugh on us.**

# Family Programs

Pre-registration required for programs at [nassaumuseum.org](http://nassaumuseum.org)



## Family Saturdays

An artmaking program for the whole family

**On-site:** The Manes Center

**Date:** Saturdays, Oct.- Dec.  
Not available Nov. 12, Nov. 26

**Timed Sessions:** Drop in between 12-3 pm. Stay 45 mins.

**Price:** Free for Members, \$10 Non-member Child, \$20 Non-member. Member pricing for dual/family members  
**This is not a drop-off event. Children must be accompanied by an adult caregiver**

Converse, collaborate and create at Family Saturdays at the Museum. Get inspired by the art and objects in the galleries and then join us at the Manes Center to explore and discover different materials to create your own original artwork. Family Saturdays allows children and their adult partners to connect while talking about and making art together. A new project is featured every week. Visit our reading room to discover books and toys, and contribute to The Lobby Project, a collaborative art installation made by visitors like you. For inquiries, please email [artclasses@nassaumuseum.org](mailto:artclasses@nassaumuseum.org)

## Super Family Sunday

Pollinators

**On-site:** The Mansion and The Manes Center

**Date:** Sunday, Oct. 2

**Times:** 11 am-12:30 pm, 1-2:30 pm

**Price:** \$10 Members and Children  
\$20 Non-members

What is a pollinator? Who are they? What can you do to protect them? Join us as we explore the incredible world of bees, birds and butterflies, and how important they are to the health of our planet. Create a set of wings then join our Pollinator Parade, join us for a story time about the secrets and stories of the butterfly garden and select a pollinator-friendly native plant and bring home to plant.

## Super Family Saturday

Día de los Muertos (Day of the Dead)

**On-site:** The Mansion and The Manes Center

**Date:** Saturday, Nov. 5

**Timed Sessions:** 10 am-2 pm, with time entries for performances at 10 am and 12 pm with art making ongoing.

**Price:** \$10 Members and Children  
\$20 Non-members

Celebrate the Mexican tradition of Day of the Dead which will include artmaking, Mexican-American musicians, dance performances, food vendors, and a display of artwork by local visual artists exploring cultural themes. More details to come...

## Break for Art

**On-site:** The Manes Center

**Dates:** Friday, Nov. 11 (Veteran's Day)

**Time:** 11 am-12:30 pm, 1-2:30 pm

**Price:** \$5 Members and Children,  
\$10 Non-members

One day of art making at the Manes Center on your school break.

**Become a member and Save on your ticket price!**

“  
HOW IMPORTANT ARE BEES,  
BIRDS AND BUTTERFLIES?  
”



# The Manes Education Center

Pre-registration required for programs at [nassaumuseum.org](https://nassaumuseum.org)

Three studios, expansive grounds and a patio filled with native plantings at the Manes Art and Education Center allow for both indoor and outdoor artmaking in a serene and inspiring setting. In-person art classes and workshops are available this winter and spring, along with virtual class offerings for comfort and convenience. Visit [nassaumuseum.org/education](https://nassaumuseum.org/education) for a line-up of classes for adults and teens including painting, drawing, mixed-media, fiber arts and ceramics coming soon.

## Adults

Find your medium or try something new! Offerings for weekly classes and one-off workshops include:



Acrylic Painting



Ceramics



Eco Printing and Shibori Dying

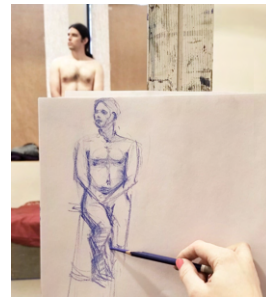


Figure Drawing



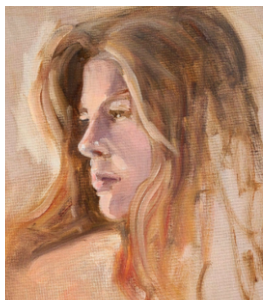
Fundamentals of Drawing



Landscape Painting



Oil Painting



Portrait Painting



Scarf Painting and Dying



Watercolor Painting



## Summer Art for Teens

A summer art class for students entering grades 8 through 12 in Fall 2022

On-site: [The Manes Center](#)

Dates: Monday-Friday Time: 1-3:30 pm

Price: \$270 Members, \$300 Non-members per week.

High school students focus on the elements and principles of art and design through group and individual instruction. Working from reference materials, still lifes, and live models,\* participants are encouraged to develop traditional art making skills while considering innovative techniques inspired by contemporary artists. Painting, drawing and multi-media assignments are individualized to each participant's needs, interests and areas of concentration while learning about a variety creative career options for artists. Teens engage in lively critique sessions and portfolio reviews under the guidance and support of skilled artist, college educator, and college admissions associate, Robyn Cooper.

\*may include some model nudity

Summer Week 1: July 11-15 Summer Week 2: July 18-22 Summer Week 3: August 1-5

# Access Programs

Pre-registration required for programs at [nassaumuseum.org](http://nassaumuseum.org)



## Mornings at NCMA

Early morning private guided experience

**On-site:** The Mansion

**Dates:** Saturdays, TBD

**Time:** 9:45-11 am

**Price:** \$15 Adult, \$10 Senior, \$5 Student

Early Morning Access Program, a monthly program for teens and young adults on the autism spectrum (Autism Spectrum Disorder) ages 13-23, to be accompanied by a parent or care partner. Led by an art therapist, each session will take its' inspiration from the art on view in the galleries. Family members and friends 12 years and up are welcome. This is a private guided experience that takes place in the Museum before it opens to the general public.

This program is sponsored by The Phyllis Backer Foundation, The Milton and Sally Avery Arts Foundation and additional support from North Shore Autism Circle.

## Art of Conversation

**Virtual**

**Dates:** TBD

**Time:** 11 am-12:30 pm

**Price:** \$10 Adult

Art of Conversation is a virtual program for adults with Alzheimer's disease or memory loss. Museum Educator, Pam Koehler, facilitates an inquiry-based art program encouraging open discussion and personal reflection. Each session is unique with changing themes, presents different works of art from our galleries, and is accompanied by an art demonstration.

This program is sponsored by The Phyllis Backer Foundation, The Milton and Sally Avery Arts Foundation, and additional support from Alzheimer's Association.

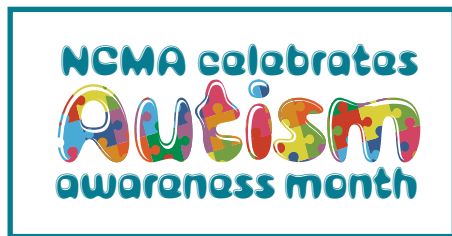
## Art in Translation

Curatorial and Education staff worked together closely to create gallery labels in Mandarin and Spanish languages accessed through QR codes located on object labels. With translations by our research ace Alex Maccaro and the audio expertise of Einav Dembin, these were recorded and offered on our web site, another first for the Museum in its ongoing efforts to be more accessible and work with all of Long Island's communities. They have been downloaded hundreds of times. The Museum also earned top grades in its evaluation according to the standards of accessibility for Universal Design, thanks in part to funding from the Museums Association of New York and the New York State Council for the Arts.



“  
THESE ARTISTIC SESSIONS  
INSPIRE US ALL  
”

# Education Highlights



On April 30, NCMA hosted a joyful day of theater, music and art to celebrate people of all ages on the Autism Spectrum along

with their families, care providers and coaches. The program included a multi-sensory theatrical performance brought to us by the Tilles Center, a scavenger hunt through our galleries exploring *Impressionism: A World View*, and on view at the Manes Center, *Spectrum Perspectives*, an exhibition of art made by people with ASD.



## Break for Art and Family Saturdays



We were excited to welcome families back to the Manes Art and Education Center for art making activities. Break for Art, taking place during the April school break, consisted of projects relating to material in *Impressionism: A World View*, including hat-making based on a painting by Edith Prellwitz,

and sculptural views through windows inspired by the works of Charles Neal, Hugo Grenville, and Jean-Jules-Louis Cavallès. Family Saturdays consisted of a myriad of projects exploring special artmaking techniques, including wax-resistant water color painting, textured collaging, and tin-foil printmaking. We look forward to seeing families back in the fall for more of our fun and educational family programs.

## Engaging Communities



NCMA continues to expand our museum family, building partnerships with school districts and community organizations across Long Island to include Girls Inc., an organization that works to promote health, education and independence among

its students, students from Brentwood Middle school's ENL (English as a New Language) and numerous Girl Scouts of all ages from across Nassau County.

## Arts Ambassadors' Immersive Summer Retreat

In partnership with East Meadow School District and the Tilles Center, classroom and art teachers were invited to participate in a three-day immersive program at three art based institutions (NCMA, Gershwin Theater and the Tilles Center) where educators engaged with the visual and theater arts through a series of rich arts activities. This deep, sustained dive into culture was designed to inspire teachers to use the arts in their classrooms as a powerful alternative and complementary learning approach for their students.

## Summer Art Lab

In the first week, our young artists sketched and painted en plein air (out on our grounds) as they explored the beauty of the natural world. A unique blend of indoor and outdoor creative adventures, Summer Art Lab



utilizes all the wonderful resources the museum has to offer, including current exhibitions and outdoor sculptures located on our 145-acre nature preserve. This year features a variety of new materials, techniques, and processes to challenge and engage.

# Look Who's Here!

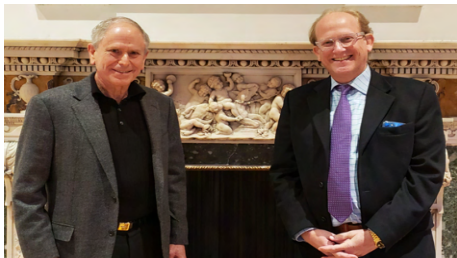
Two stars of the FEM exhibition in 2021, **Jessica Jackson Hutchins (1)** and **Alison Janae Hamilton (2)** (who is in the current show as well) were in the news. Hutchins won a Guggenheim Fellowship for 2022 and Hamilton is the author of an important text in *The Great Migration Reader*, published on the occasion of a traveling exhibition opening at the Baltimore Museum in October. Thanks to recent auction headlines, **Flora Yukhnovich (3)**, who dazzled us in the Impressionism show this spring, was dubbed “the hottest artist in the world” by Artnet. From the music exhibition, **Christine Sun Kim (4)** was profiled in *The New York Times* when two of her huge murals were installed in lobbies at the Queens Museum and in St. Louis at the Kemper **Robert Wilson**, whose portrait of Lady Gaga was a hit, is the subject of a new documentary on Arte TV. **Sir Idris Khan** opened a magnificent solo show at the Chateau La Coste in Provence while **Aaron Taylor Kuffner** had works at both the Burning Man and Coachella festivals.



"Christine Sun Kim" by Joi is licensed under CC BY 2.0.

# Membership

## Corporate Members



Recently, co-chairs Michael Brown and Scott Defrin welcomed the Corporate Committee to a lively meeting at Scott's store, European Decorative Arts in Greenvale. The committee is planning an exciting networking event during the Supernatural exhibition and a fundraiser to benefit the Museum.

### Corporate Partners

Ike, Molly & Steven Elias Foundation

### Corporate Friends

Berkshire Hathaway HS-Laffey Intl.  
Real Estate

Douglas Elliman Real Estate

European Decorative Arts Company

Ruskin Moscou Faltischek, P.C.

RTS Print Services

### Small Business Partners

Collard & Roe, PC

Katz Nassau Agency, Inc.

Kupferberg Team at Douglas  
Elliman Real Estate

R.D. Geronimo & Associates

### Individual Business Partners

Anna Alesci Photography

Dee Dee Brix, Luxury Home Specialist

C.A.R. Consulting Services, LLC

Nancy Cuite, Luxury Real Estate Agent

Mollie Grossman, Licensed Associate  
Real Estate Broker

Hillary Needle Events Inc.

Holst Kelley Wealth Management Group

Law Office of Cary Scott Goldinger

Tab Hauser Photo

White Pear Photography Studios, Inc.

### Young Professionals

Michelle Lent, Real Estate Salesperson

Julia Liberman, JL fine Art Appraisal, LLC

## Supporting Level Members

In June, this group enjoyed special access to the *Impressionism* exhibition, with private tours led by Museum Director Charles Riley. Educator Einav Dembin was on hand to engage families that attended. Join or renew as a Supporting member to enjoy free admission at 1,000 other museums in the NARM (North American Reciprocal Museums) program, plus four guest passes and invitations to exclusive Museum receptions and events like this one. If a current member upgrades to this level mid-way through a current membership, the extra benefits start right away!



## VIP Tour and Wine Tasting sponsored by Capital Group

In May, Corporate and Museum Council members were joined by Trustees and friends for a Director's Tour of the *Impressionism* exhibition, then were treated to a wine tasting hosted by Patti Tupper and Becky Wuest Creavin, co-chairs of the Museum Council. They introduced OneHope, a Napa Valley winery with over 30 varietals that donates part of every purchase to a designated non-profit. Four wines were sampled along with tasting bites. Ten percent of guests' purchases at [onehopewine.com/event/131311](https://onehopewine.com/event/131311) benefit the Museum. This link is valid for the rest of the year, so feel free to join in the fun this summer with Vintner's Rose. Patti and Becky wanted to share this easy way to support the Museum. Their entertaining presentation with trivia questions and prizes was enjoyed by all.



## The Art of Shopping



Nothing fits better than art and fashion. VIP guests from the Museum were treated to fantastic fare and champagne by the tony Tory Burch boutique at the Americana. The store hosted the Board, Council and Corporate members for a wonderful event and generously donated nearly \$2,000 from sales. Among the partygoers were Rita Castagna and Council Co-Chair Becky Creavin, Linda Ugenti, Grace and Cindy Jiang, Cherry Hou, Julie Hong, Richard Li, Mary Chen and her daughter Natalie.

# Thank you

## Board of Trustees

### PRESIDENT

Angela Susan Anton

### VICE PRESIDENT

Arthur S. Levine\*

### TREASURER

William Achenbaum

### MEMBERS

W. Russell G. Byers, Jr

Todd Cohen, MD

Mrs. Stephen J. Cuchel

Mrs. Gerard L. Eastman, Jr

Maryam Franzella, Esq

Steven A. Klar

Harvey Manes, MD

Jodi Rosenthal

Cynthia Senko Rosicki, Esq.

Laura Savini

Jonathan R. Serko

Margaret L. Stacey

Lieta Urry

Carol Wolowitz

### TRUSTEES EMERITI

Mrs. Vincent de Roulet

H. Brooks Smith\*

### DIRECTOR

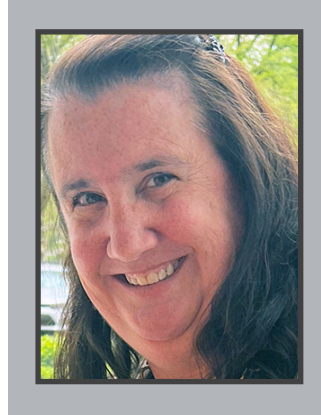
Charles A. Riley II, PhD

### DIRECTOR EMERITA

Constance Schwartz

\*Past Presidents

## New Members Join Board



The Museum enthusiastically welcomes two new members to the Board of Trustees, Jodi Rosenthal (*left*) and Nathalie (Lieta) Urry (*right*), both well-known Long Island philanthropists and longtime supporters of our work.

Rosenthal's extensive governance experience with local non-profits has led to important positions at the JCC and Northwell. Her art connoisseurship along with her admirable dedication to community service make her an ideal board recruit. In her free time, she excels at bridge and other card games.

Urry is a longtime supporter of the Museum whose guidance has been welcomed by the current director and his predecessors. The author of children's books, she is a trustee of the Marymount School and received her Masters from Bank Street having earned her BA from Pine Manor. She taught kindergarten at Trinity School from 1990-1993. She divides her time between Manhattan and Locust Valley and has three children.

## Major Donors and Sponsors

The Museum and its exhibitions are supported by  
**The County of Nassau under County Executive Bruce Blakeman and the Nassau County Legislature**  
**The Board of Trustees**  
**Members including Museum Council**  
**Corporate Committee**  
**Contemporary Collectors Circle**  
**Friends of the Garden**  
**Exhibition and Event Sponsors**  
**Government and Foundation Grants**  
**Corporate and Private Donors**  
**Sources of earned income such as admissions, facility rentals and the Museum Store**

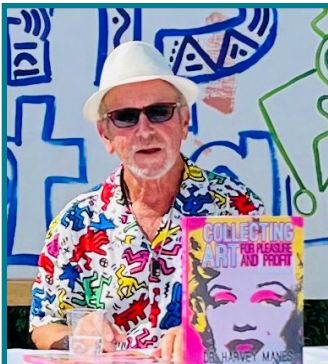
Other generous contributions are provided by  
**Art Bridges**  
**Bank of America**  
**Capital Group**  
**Ferriday Fund Charitable Trust**  
**Claire Friedlander Family Foundation**  
**Gerry Charitable Trust**  
**Lillian Haug**  
**Long Island Sound Study**  
**NYS Council on the Arts with the support of the Office of the Governor and the NYS Legislature**

Educational programs at the Museum are made possible through the generosity of  
**Milton & Sally Avery Arts Foundation**  
**Phyllis Backer Foundation, Inc.**  
**Ike, Molly & Steven Elias Foundation**  
**DuBose and Dorothy Heyward Memorial Fund**

Additional educational support is provided by  
**Institute of Museum and Library Services**  
**Museum Association of NY**  
**Margaret Neubart Foundation**  
**North Shore Autism Circle**

## VIP "First Dibs" Preview

The museum was honored by the Hamptons Fine Art Fair and several members were invited to join the director for a VIP "first dibs" preview on Bastille Day including trustees Harvey Manes, who was a panel speaker, Todd Cohen and Laura Savini. The special treatment for council and corporate members was generously sponsored by Rick Friedman whose collection of Abstract Expressionist art by women was a highlight of our recent exhibitions and also featured at the fair. Friedman and Manes are lending Surrealist works to the current museum show.



# Great Impressions



## First Impressions

Who doesn't love Impressionism? On opening night, feasting on masterworks not just from France but the three local colonies (Southampton, Southold and Old Lyme) and outposts as far away as Hanoi, the Museum's supporters gathered along with contemporary artists in the exhibition (Wendy Prellwitz, Barbara Ernst Prey) to celebrate this movement that is still changing the way we experience the world.



# New On Campus



## Fountain Restoration

The Museum is excited to unveil the restored fountain, the centerpiece of its historic formal garden. Originally designed in 1926 by Marian Cruger Coffin—a female pioneer in landscape architecture—the symmetrical plan centered on the fountain is in itself a Gilded Age masterpiece. A skilled mason repaired the elegant circular basin, giving it an immaculate finish shimmering once again with water just in time for the roses to bloom and the fall colors.



## Lantern Festival Returns

Last year thousands of local families enjoyed the Winter Lantern Festival that lined the mile-long drive, transporting them into Surreal worlds (the timing this year could not be better!) of color and light. Following the Chinese tradition of holiday light shows, this year’s edition, which opens in October and runs into January, promises to have even more attractions and surprises.

## Landscape Master Plan

The William Cullen Bryant Preserve is 145 glorious acres that includes not just the famous formal garden and arboretum but rolling meadows. Thanks to a generous grant and enlightened leadership (project manager Jean Henning, our longtime expert, assisted by volunteer James Carraciolo and a wonderful birdhouse project built and donated by Martin Wenz), eight acres of native grassland will be restored in an effort to protect the Hempstead Harbor Watershed. The project will include the removal of non-native invasive plants and the sowing of a blend of native grasses and flower seeds selected by experts. Only a quarter of a mile from the shoreline, our land is key to groundwater protection. The project is funded by a grant from the Long Island Sound Study, which initiated the Long Island Sound Futures Fund in 2005 through the EPA’s Long Island Sound Office and The National Fish and Wildlife Foundation.

The Museum also received a grant of \$75,000 from the Gerry Charitable Trust to develop a Cultural Landscape Report, an action plan with prioritized projects and the long-term maintenance of the preserve. Starting with a detailed site history, from indigenous land use to the present with a focus on the designed estate of France and Childs Frick, the study will culminate with a vision for future projects.



## Richard Heinrich Sculpture Installation

The museum is excited to announce the addition of two monumental steel sculptures by Richard Heinrich, sited on the front lawn by the artist himself one brilliant summer day. Their complex geometric surfaces were oiled just before the installation; the mild steel structures have a stunning, rich burnt sienna patina. *New York Bridge* and *Perdido Up* were flawlessly installed by a team led by Deputy Director Fernanda Bennett. Take a moment on your next visit to stroll around these two new additions to the sculpture collection and enjoy the ways they converse with each other as well as the surrounding environment.



# Let's Celebrate



## Give A Gift

**A** Tribute or Memorial Gift to the Museum is an especially meaningful way to recognize friends, family, business associates, and special occasions, while simultaneously supporting the exhibitions, and educational programs of one of the region's greatest treasures. Your contribution will be acknowledged with a personalized letter sent to the honored individual or family—with out reference, of course, to the amount of the gift. Tribute Gifts mark special occasions such as weddings, birthdays, anniversaries, and graduations. Or celebrate a holiday with a gift to the Museum in the name of someone special. Tribute and Memorial Benches offer a meaningful gift for an avid art, nature or sculpture lover. 4 foot teak wood bench and plaque \$2,500.

For more information  
**call: 516-484-9338 x45**  
 email:  
[vpartridge@nassaumuseum.org](mailto:vpartridge@nassaumuseum.org)  
 web link:  
<https://nassaumuseum.org/tribute-and-memorial-gifts/>

**For more information on**  
**Memorial Gifts**  
**Tribute Gifts**  
**Benches**  
**Sponsoring a Trail**  
**Hosting an Event**  
**Museum Store**  
**call: 516-484-9338 x45**



## BE A PART OF THE PAST, THE PRESENT, THE FUTURE



### Sponsor a Trail

**O**ur series of nature trails require constant care. After a few months of neglect, a trail is no longer a trail. Trail sponsorships help by giving individuals, families, friends, groups, businesses, and clubs of any size an opportunity to support a trail on an annual basis. Sponsorship funds the maintenance of the trails including marking, clearing, debris removal, safety improvements and mapping. In addition, you are supporting the stewardship of the gardens, arboretum and surrounding natural areas. They are also a nice way for an individual or group

to memorialize a friend or family member. Sponsors are recognized on trail head markers, on our website and on the posted sculpture and trail maps.



For more information visit:  
[www.nassaumuseum.org/sponsor-a-trail/](http://www.nassaumuseum.org/sponsor-a-trail/)

### Host an Event

**H**ost the perfect event at one of the most beautiful locations on Long Island. You will not find a more romantic spot to host your dream wedding, shower, anniversary or birthday party. Located on the fabled Gold Coast, the Museum is situated on 145 acres and occupies an elegant Georgian-style mansion. The arboretum and preserve offer numerous locations for fully outdoor events: outdoor terraces,



courtyards, formal gardens, sculpture garden, pinetum, rolling lawns, meadows and ponds. Your guests are welcome to view the art exhibitions or stroll the grounds throughout your event. Truly one of the most unforgettable event locations, the Museum offers every bride or host a day to remember. Most importantly, your event will be the only event held at that time. Your special day will belong only to you.

web link:  
<https://nassaumuseum.org/event-rentals/>

### Museum Store

**B**e sure to check out the Museum Store for new merchandise this summer. Every show brings fantastic gift ideas, from games to books to fun clothing and jewelry. Supernatural-themed fun for the whole family. Don't forget to take home a souvenir of your out-of-the-world visit!

**Gift certificates are also available.**  
**Members always receive a 10% discount** on regularly priced merchandise! Your purchases support the mission and preservation of the Museum and its grounds and arboretum.



# Visitor Information

## Upcoming Exhibitions

**The Big Picture: Photography Now**  
Opening in November

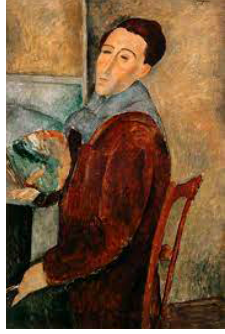


Photography's ascent in the art world is an international phenomenon. This star-studded exhibition pans the historical roots of the medium (Ansel Adams and his generation) and the thrilling, largeformat color works of such Contemporary masters as Cindy Sherman, Thomas Struth, James Casebere and Gregory Crewdson.

From the documentary to the painterly, images bear witness to the times. As Susan Sontag wrote, "Life is not about significant details, illuminated a flash, fixed forever. Photographs are."

**Modigliani and the Modern Portrait - Coming in 2023**

Internationally renowned Modigliani scholar Kenneth Wayne is the guest curator for a blockbuster exhibition that will include works that have only just been authenticated (by a committee he heads). Modigliani's influence on his own generation as well as painters since will be tracked in this provocative exhibition, the first devoted to this important figure by any Long Island museum.



## Open

Tuesday – Sunday,  
11 am – 4:45 pm  
Last entry is 4 pm

## Admission

Members.....FREE  
Adults.....\$15  
Seniors (62+).....\$10  
Students.....\$5  
(including college students with ID)  
Children (ages 4 - 12).....\$5  
Children (under 4).....FREE

## Access Your Benefits Remotely

**On Demand**  
Videos and activities to enjoy anytime

**Virtual Programs**  
Artist talks, classes, and events

**Live At The Museum**  
Safe, small group art experiences

## We're Here To Help

(516) 484-9338

**Membership**  
Ext. 23  
membership@nassaumuseum.org

**Facility Rental**  
(877) 885-0705  
eventrentals@nassaumuseum.org

**Program Registration**  
Ext. 12  
programs@nassaumuseum.org

**The Manes Center**  
(516) 626-5280  
artclasses@nassaumuseum.org

## Directions

The Nassau County Museum of Art is located 20 miles east of New York City on the former Frick "Clayton" Estate, a 145-acre property at the heart of Long Island's Gold Coast.

**By Car:** Long Island Expressway (495) to exit 39 or Northern State Parkway to exit 31. Drive north on Glen Cove Road to the intersection, Route 25A Northern Boulevard. Turn left and continue for two blocks to the museum entrance on the right.

**By Bus:** Nassau County N20H bus stops on Northern Boulevard at the entrance to the Museum.

**By Train:** Long Island Rail Road Oyster Bay line to the Roslyn station or Port Washington line to the Manhasset station. The museum is a short taxi, Uber or Lyft ride from either station.

MuseNews designed by Elizabeth Prinz  
prinzstudio@gmail.com



**NASSAU COUNTY MUSEUM OF ART**

One Museum Drive, Roslyn Harbor, New York 11576  
www.nassaumuseum.org